



Chair of Process
and Data Science

RWTHAACHEN
UNIVERSITY



PROVED: A Tool for Graph Representation and Analysis of Uncertain Event Data

Marco Pegoraro, Merih Seran Uysal, Wil M.P. van der Aalst

42nd International Conference on Application and Theory of Petri Nets and Concurrency
June 2021

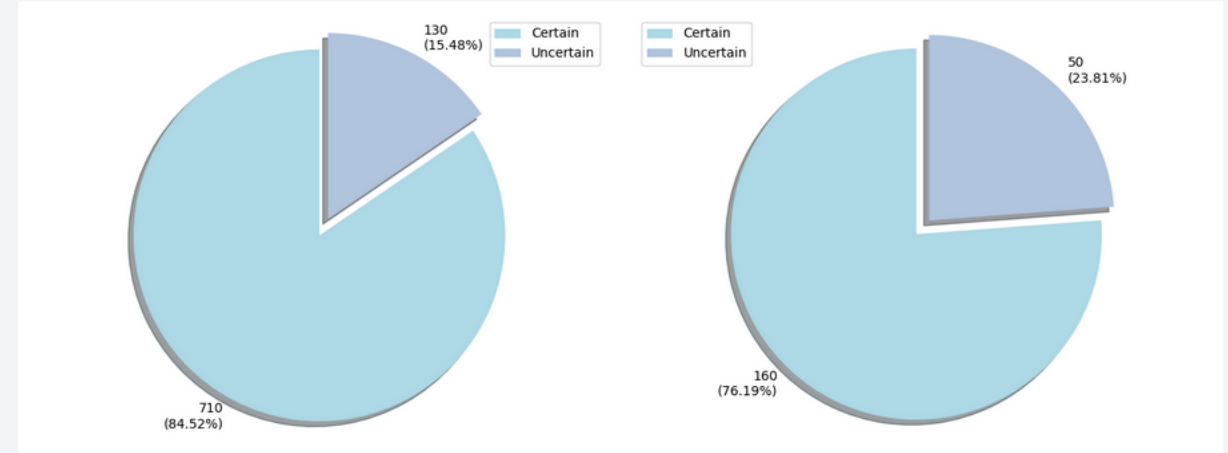
Uncertain Log Explorer - sampleUncertainLog

- Variant 0
90 trace(s)
4 event(s)
- Variant 1
60 trace(s)
4 event(s)
- Variant 2
40 trace(s)
4 event(s)
- Variant 3
10 trace(s)
4 event(s)
- Variant 4
5 trace(s)
4 event(s)
- Variant 5
5 trace(s)
4 event(s)
- [Delete log selection](#)

Uncertain Log Statistics

- Num. events: 840
- Num. traces: 210
- Average trace length: 4.0 events
- Num. variants: 6

Uncertain Events



Activities

Activity	Occurrence (min)	Occurrence (max)	Occurrence (min)(relative)	Occurrence (max)(relative)
Register Request	210	210	25.0%	25.0%
Decide	210	210	25.0%	25.0%
Examine Casually	105	150	12.5%	17.86%
Pay Compensation	90	90	10.71%	10.71%
Reject Request	80	120	9.52%	14.29%
Examine Thoroughly	60	105	7.14%	12.5%

Start Activities

Activity	Occurrence (min)	Occurrence (max)	Occurrence (min)(relative)	Occurrence (max)(relative)
Register Request	210	210	25.0%	25.0%
Reject Request	0	0	0.0%	0.0%
Pay Compensation	0	0	0.0%	0.0%

NAVIGATION

Dashboard

ALGORITHMS

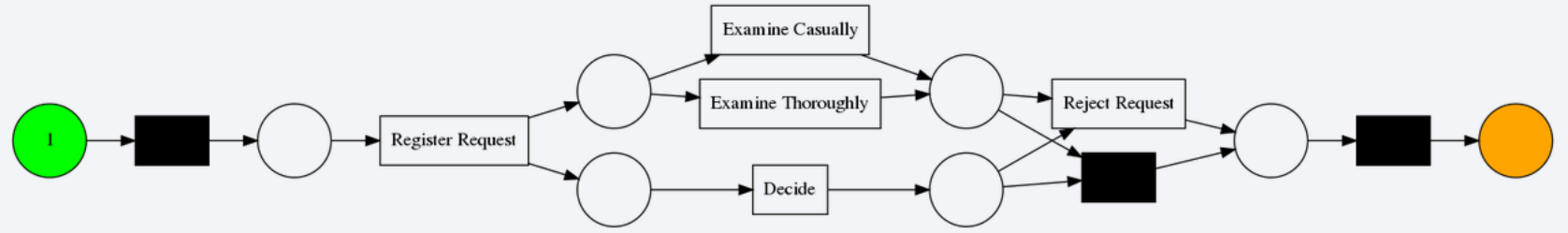
Conformance Checking

Uncertain Log Explorer - sampleUncertainLog

- Variant 0
90 trace(s)
4 event(s)
- Variant 1
60 trace(s)
4 event(s)
- <<Variant 2>>
40 trace(s)
4 event(s)
- Variant 3
10 trace(s)
4 event(s)
- Variant 4
5 trace(s)
4 event(s)
- Variant 5
5 trace(s)
4 event(s)
- Delete log selection

- Trace 0
- Trace 1
- Trace 2
- Trace 3
- Trace 4
- Trace 5
- Trace 6
- Trace 7
- Trace 8
- Trace 9
- Trace 10
- Trace 11
- Trace 12
- Trace 13
- Trace 14
- Trace 15
- Trace 16
- Trace 17
- Trace 18
- Trace 19

Behavior Graph Behavior Net

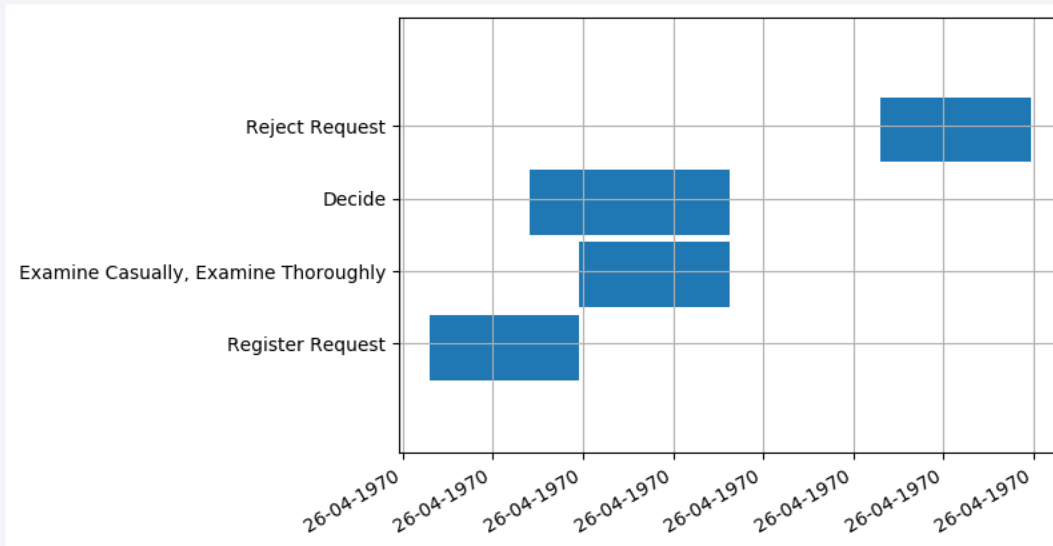


Uncertain Log Explorer - sampleUncertainLog

- Variant 0
90 trace(s)
4 event(s)
- Variant 1
60 trace(s)
4 event(s)
- <<Variant 2>>
40 trace(s)
4 event(s)
- Variant 3
10 trace(s)
4 event(s)
- Variant 4
5 trace(s)
4 event(s)
- Variant 5
5 trace(s)
4 event(s)
- [Delete log selection](#)

- <<Trace 0>>
- Trace 1
- Trace 2
- Trace 3
- Trace 4
- Trace 5
- Trace 6
- Trace 7
- Trace 8
- Trace 9
- Trace 10
- Trace 11
- Trace 12
- Trace 13
- Trace 14
- Trace 15
- Trace 16
- Trace 17
- Trace 18
- Trace 19

Behavior Graph Behavior Net **Gantt Diagram**



Event	Activities	Timestamp (min)	Timestamp (max)	Indeterminate
0	Register Request	26-04-1970 18:46:40	26-04-1970 19:26:40	No
1	Examine Casually, Examine Thoroughly	26-04-1970 19:26:40	26-04-1970 20:06:40	No
2	Decide	26-04-1970 19:26:40	26-04-1970 20:06:40	No
3	Reject Request	26-04-1970 21:06:40	26-04-1970 21:46:40	Yes

NAVIGATION

Dashboard

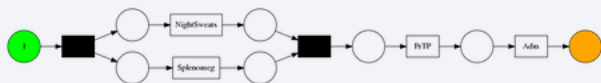
ALGORITHMS

Conformance Checking >

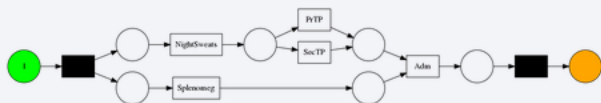
Uncertain Alignments - paper_trace

- Variant 0**
 1 trace(s)
 4 event(s)
- Variant 1**
 1 trace(s)
 6 event(s)
- Variant 2**
 1 trace(s)
 5 event(s)

Process Model



Behavior Net



Best Alignment

τ	NightSweats	Splonomeg	>>	PrTP	Adm	τ
τ	NightSweats	Splonomeg	τ	PrTP	Adm	>>

Alignment cost: 0

Worst Alignment

>>	NightSweats	Splonomeg	SecTP	>>	>>	Adm
τ	NightSweats	Splonomeg	>>	τ	PrTP	Adm

Alignment cost: 2

For more information:

<https://github.com/proved-py>

<http://mpegoraro.net/pages/research.html>